

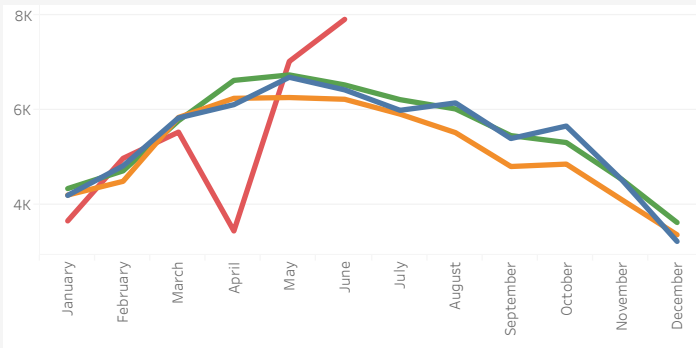
First to Know June 2020 - Greater Metro Denver

Pending	Active Listings	New Listings	Days In MLS Average	Months Supply
7,919	5,570	6,723	24	1.2
21.3%	-31.9%	-2.9%	4.3%	-36.8%
Single Family - Average	Single Family - Median	Condo - Average	Condo - Median	Pct of Closed \$ to List
\$554,837	\$475,000	\$369,764	\$322,000	99.70%
2.4%	3.3%	1.4%	4.9%	0.0%

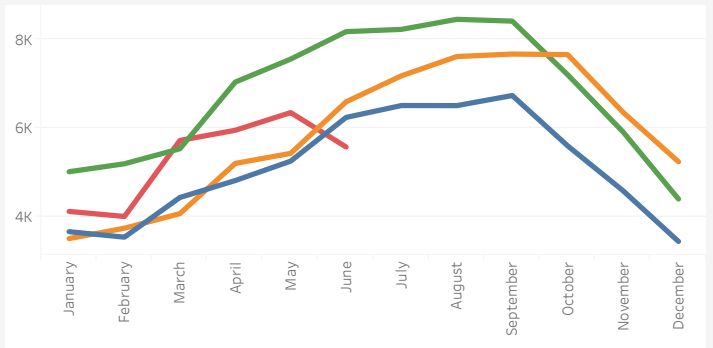
% Change is Year-Over-Year (YoY)

Year ■ 2017 ■ 2018 ■ 2019 ■ 2020

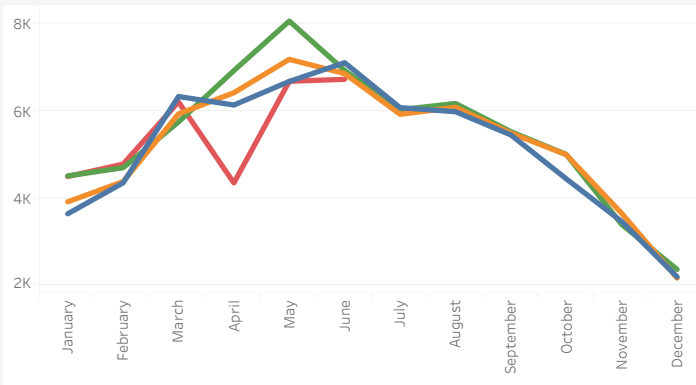
Pending



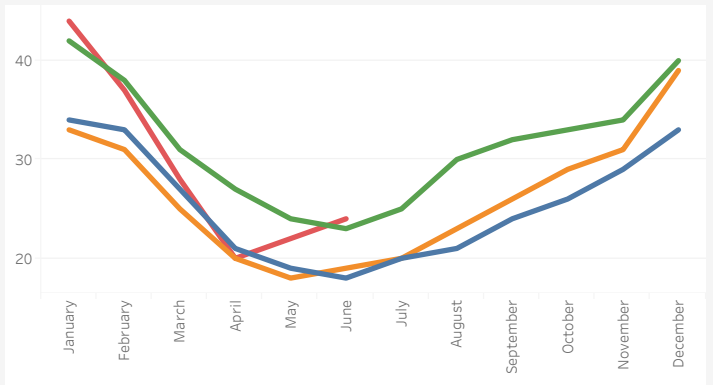
Active Listings



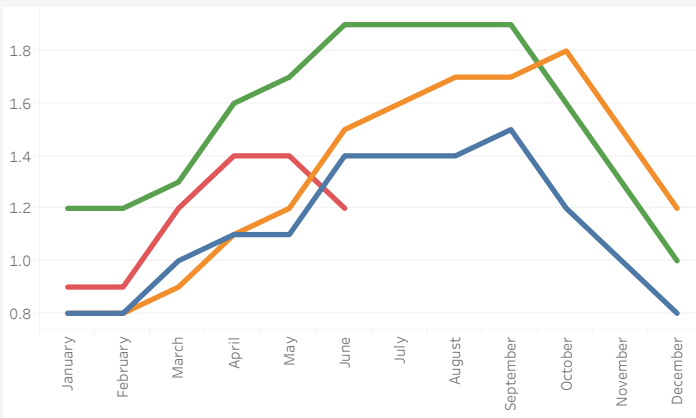
New Listings



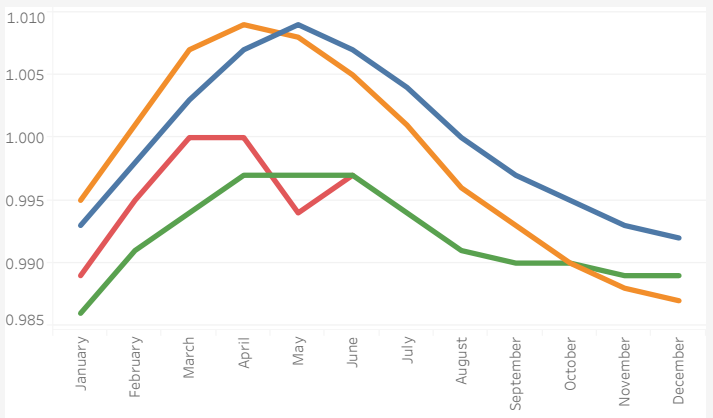
Average Days in MLS



Month Supply of Active Listings



Percent of Closed Price to List Price



% Change is Year-Over-Year

Greater Metro Denver Area includes the following counties: Adams, Arapahoe, Broomfield, Denver, Douglas, Elbert and Jefferson

•Reports are based on information from REColorado®, Inc. for the period shown in title. Note: This representation is based in whole or in part on content supplied by REColorado®, Inc. REColorado®, Inc. does not guarantee nor is in any way responsible for its accuracy. Content maintained by REColorado®, Inc. may not reflect all real estate activity in the market. •Information deemed reliable but not guaranteed.

© 2020 Land Title Guarantee Company. All rights reserved.